

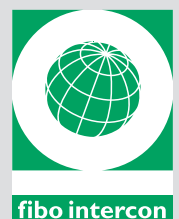
Parts catalogue
2021

fibo intercon

Belt Conveyors



Your partner in concrete solutions



About the parts catalogue

This parts catalogue contains a selection of the most common spare parts for the concrete batching plant. Some spare parts may thus not be included in the catalogue but can be purchased on request.

This parts catalogue is valid from October 1st 2021. All prices are excl. taxes and VAT. We reserve the right to change this parts catalogue and/or prices without any notice. This parts catalogue replaces all preceding parts catalogues and other similar materials with listing of fibo intercon spare parts. No responsibility can be accepted for printing errors.

On orders under €500.- there will be an administrative fee of €200.-

Definition of terms

Price

This term is used:

- a) when there is only one piece of an item in the belt conveyor or
- b) when the item is sold as a complete set

Unit price

This term is used when the belt conveyor consists of more than one piece of an item.

Pieces in/on/under the...

This phrase is followed by a number, for instance 4 pcs. This number indicates the total number included in the belt conveyor.

Ordering spare parts

You can use the following shortlist to ensure a smooth and rapid execution of your spare part order.

Shortlist

- 1) Clarify the machine number of the belt conveyor in question.
- 2) Use this parts catalogue to find the relevant spare part(s).
Important! Make sure that the drawing numbers in this catalogue correspond to those of the belt conveyor in question. If the drawing numbers are not equivalent, please contact fibo intercon for further instructions.
- 3) Clarify the required quantity, item number(s) and description(s).
- 4) Prepare and send your order by email to info@fibointercon.com indicating the following information:
 - a) Machine number
 - b) Item number(s)
 - c) Description(s)
 - d) Quantity required

Belt conveyor wide 0.8 M



Description

Rubber belt EP250/2 3+1.5 LD, Endless

Conveyour	Belt length	Item No.
0.8 x 6.0 m	800 x 12.700 mm	40860028
0.8 x 8.0 m	800 x 16.700 mm	40860029
0.8 x 10.0 m	800 x 20.700 mm	40860031
0.8 x 12.0 m	800 x 24.700 mm	40860032
0.8 x 14.0 m	800 x 28.700 mm	40860084



Item No.

42011004

Description

Supporting roller Ø76 x 220 x 15 MM

Conveyor	Pieces on belt conveyor
0.8 x 6.0 m	18
0.8 x 8.0 m	22
0.8 x 10.0 m	26
0.8 x 12.0 m	30
0.8 x 14.0 m	34



Item No.

42011005

Description

Supporting roller Ø76 x 420 x 15 MM

Conveyor	Pieces on belt conveyor
0.8 x 6.0 m	9
0.8 x 8.0 m	11
0.8 x 10.0 m	13
0.8 x 12.0 m	15
0.8 x 14.0 m	17



Item No.

42011031

Description

Return idler Ø76 x 860 x 15 MM steel

Conveyor	Pieces on belt conveyor
0.8 x 6.0 m	2
0.8 x 8.0 m	3
0.8 x 10.0 m	3
0.8 x 12.0 m	4
0.8 x 14.0 m	4

Item No. 45104728 **Description** Belt scraper 800 MM Straight
Rubber part - standard quality



Pieces on the belt conveyor

1 pc.

Item No. 48514073 **Description** Belt scraper 800 MM V-shaped
Complete with rubber part



Pieces on the belt conveyor

1 pc.

Item No. 48514078 **Description** Belt scraper
Rubber part (PUR)



48514081 Flatbar for rubberpart

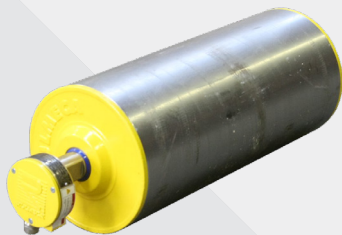
Pieces needed for item No. 48514073

2 pcs.

Pieces needed for item No. 48514073

2 pcs.

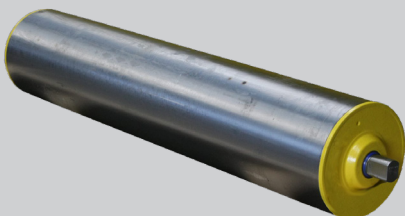
Item No. 41860019 **Description** Drum motor Ø220 x 850 MM
4 kW, 1.6 M/sec.



Pieces on the belt conveyor

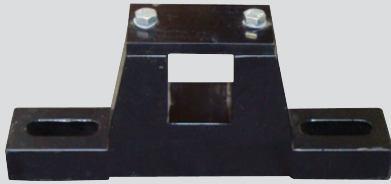
1 pc.

Item No. 41860036 **Description** Idle drum Ø220 x 850 MM



Pieces on the belt conveyor

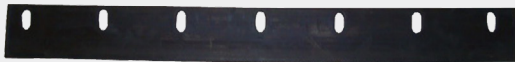
1 pc.



Item No. 41860035 **Description** Block bearing KL41

Pieces on the belt conveyor
(2 pcs. for the drum motor)

2 pcs.



Item No. 45104665 **Description** Rubber for inlet hopper - end
48554030 Rubber for inlet hopper - sides

Pieces for end
Pieces for side

1 pcs.
2 pcs.



Item No. 48514031 **Description** Rubber skirt for outlet funnel

48514014 Flatbar for outlet funnel

Pieces on the belt conveyor
Pieces on the belt conveyor

1 pc.
1 pc.



Item No. 41850221 **Description** Emergency Wire Stop

Pieces on the belt conveyor

1 pc.



Item No. 42020104 **Description** Wire for Emergency stop incl.
4 pcs. of wirelocks item#42020004
and 2x item#41850222 spring for wire

Conveyor	Wire Length Meter
0.8 x 6.0 m	6
0.8 x 8.0 m	8
0.8 x 10.0 m	10
0.8 x 12.0 m	12
0.8 x 14.0 m	14

Belt conveyor wide 1.0 M



Description

Rubber belt EP250/2 3+1.5 LD, Endless

Conveyor	Belt length	Item No.
1.0 x 4.0 m	1000 x 8.700 mm	40860095
1.0 x 6.0 m	1000 x 10.850 mm	40860093
1.0 x 8.0 m	1000 x 16.850 mm	40860030
1.0 x 10.0 m	1000 x 20.850 mm	40860062
1.0 x 12.0 m	1000 x 24.850 mm	40860022
1.0 x 14.0 m	1000 x 28.850 mm	40860023



Item No.

42011004

Description

Supporting roller Ø76 x 220 x 15 MM

Conveyor	Pieces on belt conveyor
1.0 x 4.0 m	14
1.0 x 6.0 m	18
1.0 x 8.0 m	22
1.0 x 10.0 m	26
1.0 x 12.0 m	30
1.0 x 14.0 m	36



Item No.

42011007

Description

Supporting roller Ø76 x 420 x 15 MM

Conveyor	Pieces on belt conveyor
1.0 x 4.0 m	7
1.0 x 6.0 m	9
1.0 x 8.0 m	11
1.0 x 10.0 m	13
1.0 x 12.0 m	15
1.0 x 14.0 m	18



Item No.

42011015

Description

Return idler Ø76 x 1060 x 15 MM Plastic

Conveyor	Pieces on belt conveyor
1.0 x 4.0 m	1
1.0 x 6.0 m	2
1.0 x 8.0 m	3
1.0 x 10.0 m	3
1.0 x 12.0 m	4
1.0 x 14.0 m	4



Item No. 45104612
Description Belt scraper 1000 MM Straight
PUR SH 90A - standard quality

Pieces on the belt conveyor

1 pc.



Item No. 48524043
Description Belt scraper 1000 MM V-shaped
Complete with rubber part

Pieces on the belt conveyor

1 pc.



Item No. 48524048
Description Belt scraper
Rubber part (PUR)

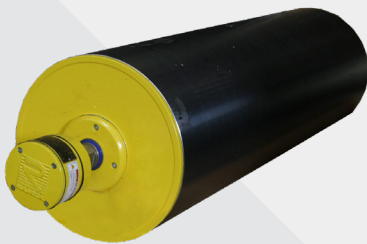
48524052 Flat bar for rubber part

Pieces needed for item No. 48524043

2 pcs.

Pieces needed for item No. 48524043

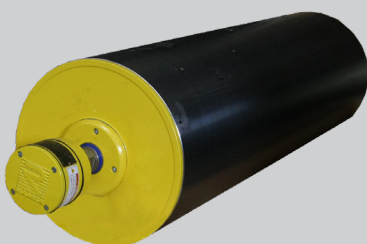
2 pcs.



Item No. 41860032
Description Drum motor Ø320 x 1050 MM
7.5 kW, 1.6 M/sec.

Pieces on the belt conveyor

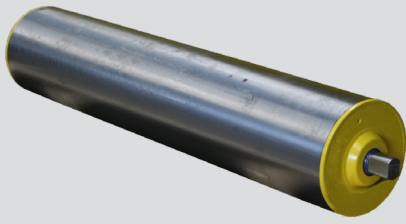
1 pc.



Item No. 41860031
Description Drum motor Ø220 x 1050 MM
4 kW, 1.6 M/sec.
(Only for 1.0 x 4.0 M conveyor)

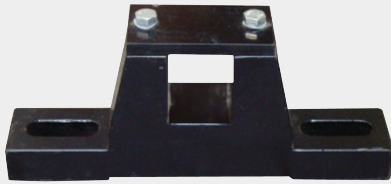
Pieces on the belt conveyor

1 pc.



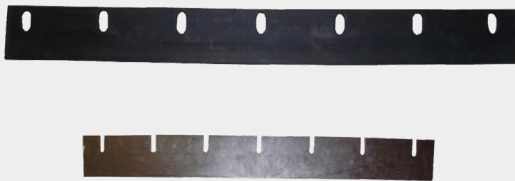
Item No. 41860037 **Description** Idle drum Ø220 x 1050 MM

Pieces on the belt conveyor 1 pc.



Item No. 41860035 **Description** Block bearing KL41

Pieces on the belt conveyor 4 pcs.
(2 pcs. for the drum motor and 2 pcs. for the idle drum)



Item No. 48524059 **Description** Rubber for inlet hopper - end
48554030 Rubber for inlet hopper - sides

Pieces for end 1 pc.
Pieces for side 2 pcs.



Item No. 48524075 **Description** Rubber skirt for outlet funnel

48514014 Flatbar for outlet funnel

Pieces on the belt conveyor 1 pc.
Pieces on the belt conveyor 1 pc.



Item No. 41850221 **Description** Emergency Wire Stop

Pieces on the belt conveyor 1 pc.



Item No. 42020104
Description Wire for Emergency stop incl.
4 pcs. of wirelocks item#42020004
and 2x item#41850222 spring for wire

Conveyor	Wire Length Meter
1.0 x 4.0 m	4
1.0 x 6.0 m	6
1.0 x 8.0 m	8
1.0 x 10.0 m	10
1.0 x 12.0 m	12
1.0 x 14.0 m	14

Copyright © fibo intercon. This parts catalogue is valid from October 1st 2021. All prices are excl. taxes and VAT. We reserve the right to change this parts catalogue and/or prices without any notice.
This parts catalogue replaces all preceding parts catalogues and other similar materials with listing of fibo intercon spare parts. No responsibility can be accepted for printing errors.

Representative:

fibo intercon a/s

Herningvej 4
DK-6920 Videbaek
Denmark
Phone: +45 97 17 16 66
Fax: +45 97 17 11 75

info@fibointercon.com
www.fibointercon.com

